



A LEADING PROVIDER of Clinical Data Exchange Solutions

Halfpenny Technologies® is a leading provider of clinical data exchange solutions, enabling hospitals and laboratories to integrate with disparate physician electronic health record (EHR) systems, deliver reports to mobile devices and communicate orders and results via a Web-based portal. Founded in 2000 and headquartered near Philadelphia, Pennsylvania, the company possesses the technology and project management skills needed to help clients solve their most challenging physician connectivity and integration needs.

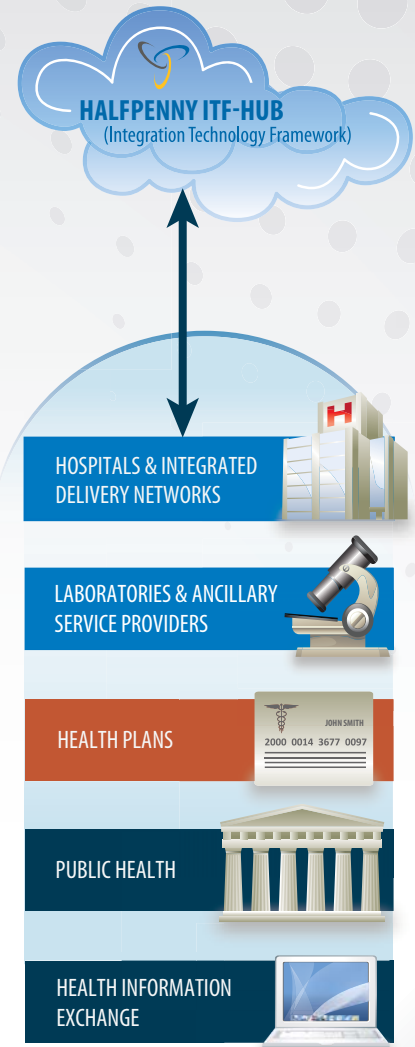
Halfpenny's **Client Connectivity Bundle** covers the full spectrum of clinical integration. **ITF-Hub®** provides a reliable, secure platform to exchange clinical, financial and administrative data while eliminating complexity and costs. **ITF-Portal®** rapidly searches and retrieves various clinical reports as a Web-based order entry and results reporting system. **ITF-GoDoc®** is a mobile application that empowers physicians to access laboratory, pathology, radiology and other clinical results reports securely while **ITF-GoDoc® MobileOE** is a mobile CPOE system for secure billing, ask-at-order entry questions, specimen types and medical necessity compliance.

The company's core management team has over 150 years of cumulative experience in both the hospital and clinical laboratory industries and has the knowledge and proficiency to effectively **integrate disparate EHR systems** that have become an essential requirement in healthcare. Focused on creating tangible lasting value in everything done, the Halfpenny team is guided by a simple premise — help clients succeed.

Key Clientele of Halfpenny:

- Hospitals and Integrated Delivery Networks (IDN)
- Clinical/AP Laboratories and Lab Outreach Programs
- Accountable Care Organizations (ACO)
- Cardiology, Pathology and Radiology Groups
- Health Plans
- State and Federal Public Health Agencies
- Electronic Health Record (EHR) Vendors
- Regional Health Information Organizations (RHIO)

Halfpenny is committed to delivering unsurpassed clinical data solutions that endure. For years, our clients have relied on our technology and expertise to achieve their clinical data integration goals. Halfpenny's suite of products and services enables clients to **efficiently and cost-effectively** meet the increasing demand for connectivity to systems residing outside organizations' technology environments as well as address business goals. Developed using some of the most advanced software tools and technology platforms available — and supported by an experienced and dedicated integration team — **Halfpenny's solutions help healthcare organizations succeed.**



**TURN OVER
TO LEARN MORE**

Call us toll-free at 855-277-9100 or visit www.halfpenny.com for more information.

Halfpenny Technologies: A leading provider of clinical data exchange solutions bridging the connectivity gap among disparate healthcare entities.

Halfpenny Technologies is committed to delivering clinical data exchange solutions that endure. We combine **superior technology** with **exceptional project management and testing services** to provide a full spectrum of clinical integration solutions, designed to meet the diverse needs of our healthcare clients and help them to achieve their **clinical data integration goals**.

Client Connectivity Technologies

Designed to efficiently and effectively facilitate the flow of patient, financial and administrative data between physician practices, laboratories, hospitals and health plans.

EHR Integration

- Facilitating the exchange of clinical and billing information between physician EHR systems and the LIS through SaaS-based hub technology.

ITF-Hub®

- Improving access to clinical results from multiple hospital and lab sources through a secure and flexible integration platform.

ITF-Portal®

- Offering physicians rapid search and retrieval of various clinical reports and intuitive ordering (CPOE) via a Web-based portal.

ITF-GoDoc®

- Providing physicians with 24/7 access to laboratory, pathology and radiology results reports through an on-the-go mobile application.

ITF-GoDoc® MobileOE

- Ensuring clean orders for labs on mobile CPOE system for tablets; includes billing info prompts, ask-at-order entry questions, specimen types and medical necessity checks.

ITF-SecureConnect®

- Reducing time and effort involved in establishing the connectivity needed to support interfaces between hospitals, labs and physician EHR systems.

Clinical Data Services

Engineered to provide the level of flexibility, reliability and security required to meet the diverse challenges involved in clinical data exchange with external systems.

LOINC® Mapping and Maintenance Services

- Linking legacy test codes accurately to the LOINC* standard for improved EHRs, payment transfers and network communication while reducing errors.

Test Dictionary Management Services

- Ensuring that test dictionaries are built to the highest quality standards possible with robust technology tools implemented by Halfpenny.

Health Plan Clinical Data Services

- Providing services and technology to facilitate the acquisition of clinical data across the spectrum of hospitals, labs and other ancillary service providers.

Clinical Interface QA Services

- Assuring orders are generated and results are received, filed and reported as needed for the routine workflow in the facility and downstream systems.

Leakage Management Services

- Using member utilization data from health plans to provide detailed data on providers that refer tests to out-of-network laboratories versus participating labs.

*LOINC® is a registered U.S. trademark. LOINC® products and services are copyright © 1995-2011, Regenstrief Institute, Inc.

Learn more about Halfpenny Technologies on our Web site.
Get the free mobile app for your phone at <http://gettag.mobi>



Interested in effectively and efficiently exchanging clinical data among physicians, laboratories and hospitals?

Call us toll-free at 855-277-9100 or visit our Web site at www.halfpenny.com for more information.